

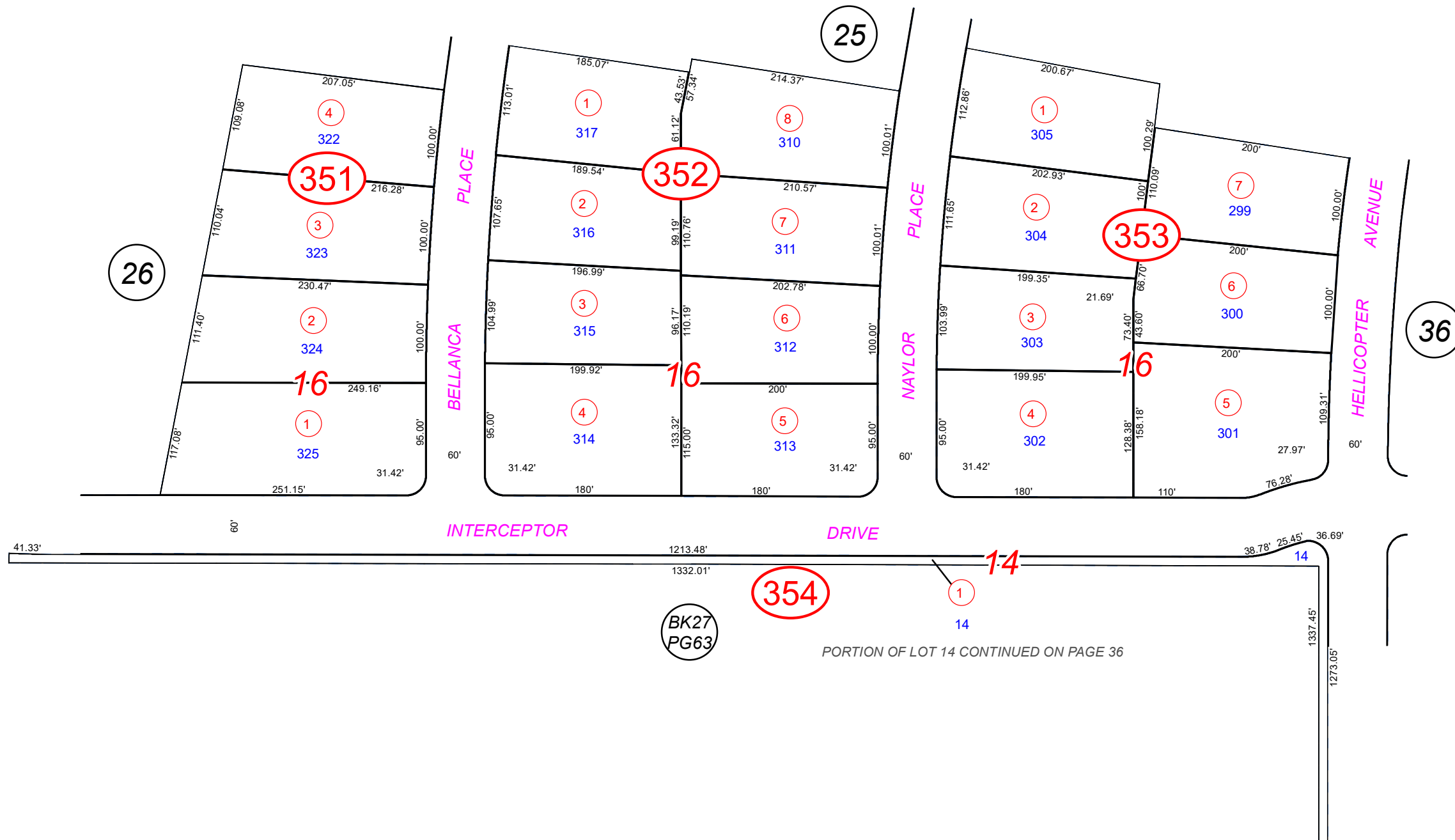
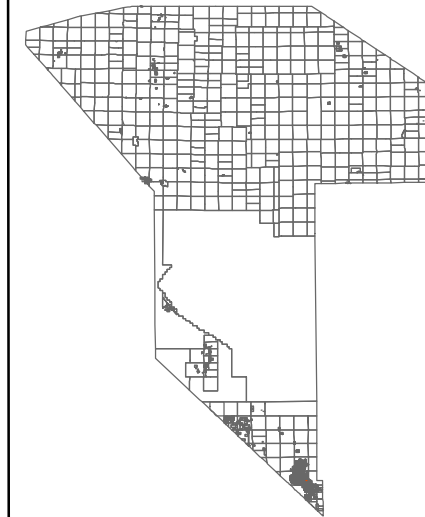
T19S, R53E  
 POR. OF SEC. 27



LOT # 313 (Corner of Naylor and Interceptor) \$69,000 Email: jerome@isn.us.com

033-35

COUNTY LOCATOR



LEGEND

\* DENOTES LOTS THAT EXTEND TO THE MIDDLE OF THE STREET.

Plot Date: 4/15/2020

PREPARED BY

**NYE COUNTY  
 ASSESSOR'S OFFICE**  
 Email: assessor@co.nye.nv.us



**CALVADA MEADOWS  
 UNIT 2**

NOTE: THIS PLAT IS FOR ASSESSMENT USE ONLY AND DOES NOT REPRESENT A SURVEY. NO LIABILITY IS ASSUMED AS TO THE ACCURACY OF THE DATA DELINEATED HEREON.